

MORAN WAY (60' WIDE)

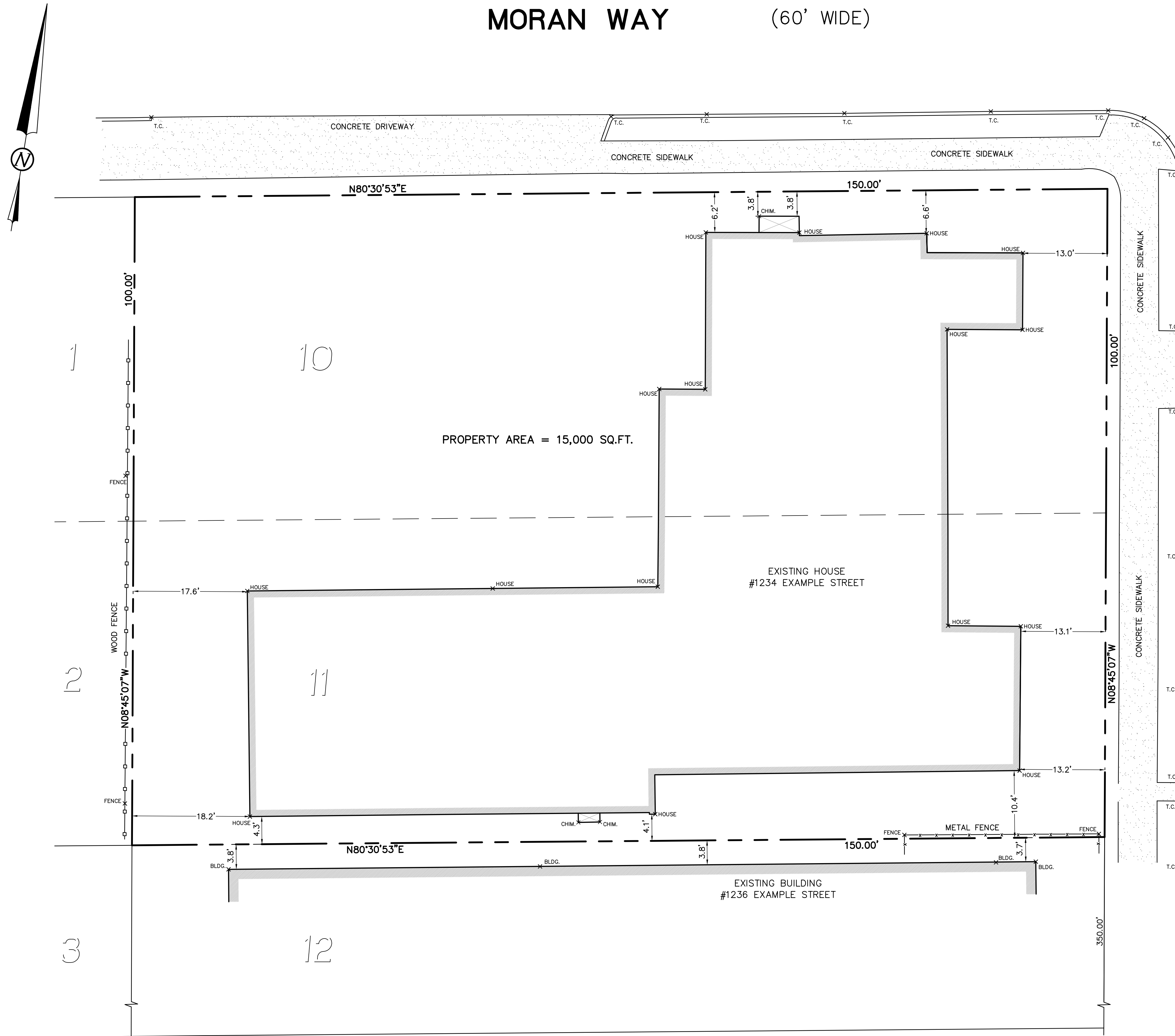
HOUSE LOCATION SURVEY

LOTS 10 AND 11,
 MAP OF THE EXAMPLE SUBDIVISION (1 M 2)
 LOCATED AT 1234 EXAMPLE STREET
 CITY OF BERKELEY, COUNTY OF ALAMEDA, CALIFORNIA

AUGUST 20, 2021 SCALE 1" = 8'

MORAN ENGINEERING, INC.

CIVIL ENGINEERS \ LAND SURVEYORS
 1930 SHATTUCK AVENUE, SUITE A
 BERKELEY, CALIFORNIA 94704
 (510) 848-1930



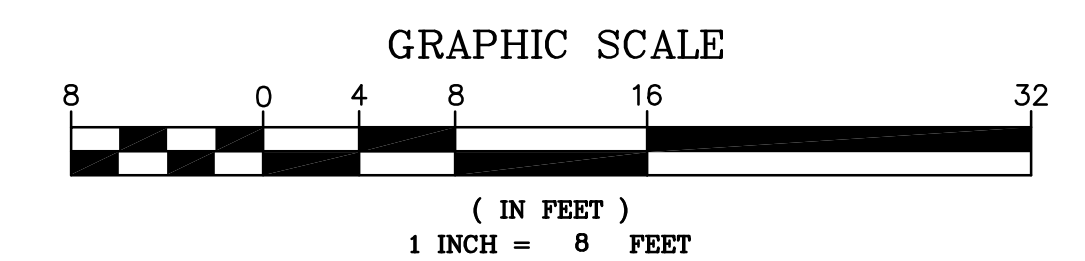
EXAMPLE STREET (60' WIDE)

LEGEND

BLDG.	BUILDING
CHIM.	CHIMNEY
T.C.	TOP OF CURB
⊙	FOUND CITY MONUMENT
▭	BUILDING FOOTPRINT
▨	CONCRETE SURFACE
—x—x—x—	METAL FENCE
—o—o—o—	WOOD FENCE

BASIS OF BEARINGS:
 THE MONUMENT LINE IN ENGINEERING STREET WAS
 TAKEN AS NORTH 80°30'53" EAST AS SHOWN ON MAP
 OF THE EXAMPLE SUBDIVISION (1 M 2).

NOTES:
 DIMENSIONS ARE IN FEET AND DECIMAL FEET.
 DIMENSIONS SHOWN ARE MEASURED FROM THE FACE OF
 BUILDING, NOT THE CONCRETE FOUNDATION.



ENGINEERING STREET (60' WIDE)

3/8" IRON PIN ⊙ 24.07' N80°30'53"E 240.00' 264.07' 2" BRASS DISC WITH PUNCH ⊙